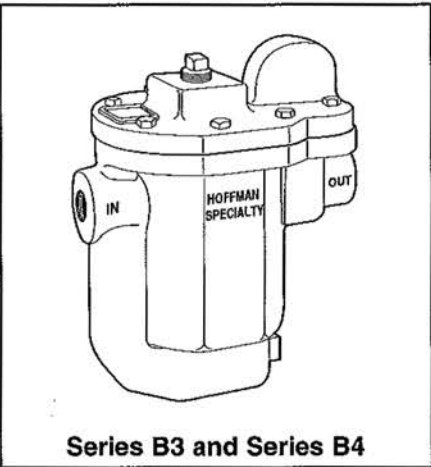


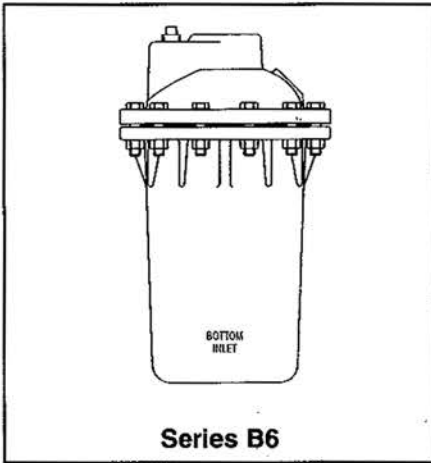


JOB	HOFFMAN SPECIALTY REPRESENTATIVE		
UNIT TAG NO.	ORDER NO.	DATE	
ENGINEER	SUBMITTED BY	DATE	
CONTRACTOR	APPROVED BY	DATE	



## Hoffman Specialty® Series B3, B4 and B6 Inverted Bucket Steam Traps

Inlet Pressure \_\_\_\_\_ psig(bar)  
 Flow Rate \_\_\_\_\_ lb/hr(kg/hr)  
 Differential Pressure \_\_\_\_\_ psig(bar)  
 Seat Rating \_\_\_\_\_ psi(bar)

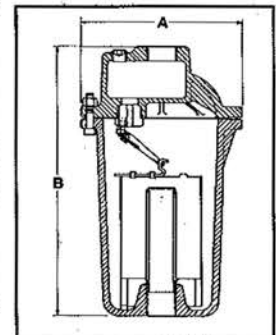
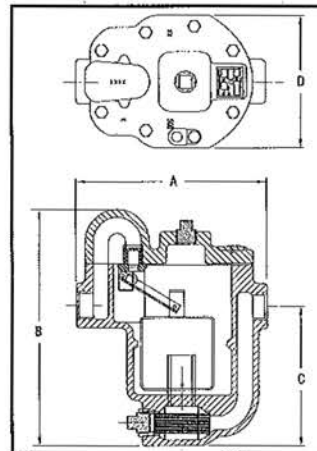


Materials of Construction	
Part	Specifications
Body and cover	Cast Iron 30,000 psi tensile
Valve Pin and Seat	Stainless Steel (Hardened)
Bucket	Stainless Steel
Lever Assembly	Stainless Steel
Cover Bolts	Grade 5 Steel

Ratings		
NPT Size in. (mm)	Max. Operating Pressure psig(bar)	Maximum Temperature °F (°C)
¾ - 2 (20-40)	250 (17.3)	406 (208)

**Dimensions, in. (mm)**

Series	NPT Size in. (mm)	A	B	C	D	Weight (Approx.) lbs. (kg)
B3	¾, 1 (20, 25)	9 <sup>7</sup> / <sub>16</sub> (239)	11 <sup>5</sup> / <sub>16</sub> (294)	6 <sup>7</sup> / <sub>16</sub> (174)	6 <sup>9</sup> / <sub>16</sub> (166)	35 (16)
B4	1, 1¼, 1½ (25, 32, 40)	11 <sup>3</sup> / <sub>16</sub> (289)	14 <sup>3</sup> / <sub>16</sub> (360)	8 <sup>5</sup> / <sub>16</sub> (211)	8 <sup>1</sup> / <sub>16</sub> (206)	61 (28)
B6	1½, 2 (40, 50)	10 <sup>3</sup> / <sub>16</sub> (259)	17 (432)	-	-	78 (35)



Series B3 and B4

## Capacities (Gross Ratings)

Series	Orifice Size In (mm)	Seat Pressure psi (bar)	Differential Pressure psig (bar)																
			1/2 (.035)	1 (0.07)	2 (0.14)	5 (0.35)	10 (0.69)	15 (1.0)	20 (1.4)	30 (2.1)	40 (2.8)	50 (3.5)	60 (4.2)	75 (5.2)	100 (6.9)	125 (8.6)	180 (12.4)	200 (13.8)	250 (17)
			Capacity lbs./hr. (kg/hr.)																
B3	.500	15	1450	1850	2300	3050	3700	4100	-	-	-	-	-	-	-	-	-	-	-
	(12.7)	(1.0)	(658)	(839)	(1043)	(1383)	(1678)	(1860)	-	-	-	-	-	-	-	-	-	-	-
	.375	30	720	980	1340	2020	2760	3300	3750	4470	-	-	-	-	-	-	-	-	-
	(9.53)	(2.1)	(327)	(435)	(608)	(916)	(1252)	(1497)	(1701)	(2028)	-	-	-	-	-	-	-	-	-
	.281	75	500	680	915	1370	1860	2200	2500	2980	3370	3720	4050	4460	-	-	-	-	-
	(7.14)	(5.2)	(227)	(308)	(415)	(621)	(762)	(998)	(1134)	(1352)	(1529)	(1687)	(1837)	(2023)	-	-	-	-	-
	.250	125	435	590	800	1200	1630	1950	2220	2665	3020	3325	3600	3970	4540	5000	-	-	-
	(6.35)	(8.6)	(197)	(268)	(363)	(544)	(739)	(885)	(1007)	(1209)	(1370)	(1508)	(1633)	(1801)	(2059)	(2268)	-	-	-
	.219	180	300	415	570	870	1190	1440	1640	1970	2250	2490	2690	2960	3400	3790	4440	-	-
	(5.56)	(10.4)	(136)	(188)	(259)	(395)	(540)	(653)	(744)	(894)	(1021)	(1129)	(1220)	(1343)	(1542)	(1719)	(2014)	-	-
.188	250	256	355	485	740	1010	1210	1390	1675	1900	2100	2285	2535	2890	3200	3780	3980	4340	
(4.78)	(17)	(116)	(161)	(220)	(336)	(458)	(549)	(631)	(760)	(862)	(953)	(1036)	(1150)	(1311)	(1452)	(1715)	(1805)	(1969)	
B4	.625	15	2382	2991	3755	5071	6366	7272	-	-	-	-	-	-	-	-	-	-	-
	(16)	(1.0)	(1080)	(1357)	(1703)	(2300)	(2888)	(3300)	-	-	-	-	-	-	-	-	-	-	-
	.5	30	1565	2053	2693	3855	5056	5926	6633	7774	-	-	-	-	-	-	-	-	-
	(12.7)	(2.1)	(710)	(931)	(1222)	(1749)	(2293)	(2688)	(3009)	(3526)	-	-	-	-	-	-	-	-	-
	.375	75	825	1137	1568	2396	3302	3983	4550	5489	6271	6953	7566	8389	-	-	-	-	-
	(9.53)	(5.2)	(374)	(516)	(711)	(1087)	(1498)	(1798)	(2064)	(2490)	(2845)	(3154)	(3432)	(3805)	-	-	-	-	-
	.344	125	780	1067	1459	2205	3015	3621	4122	4950	5636	6233	6767	7484	8522	9424	-	-	-
	(7.7)	(8.6)	(354)	(484)	(662)	(1000)	(1377)	(1642)	(1870)	(2245)	(2556)	(2827)	(3069)	(3395)	(3866)	(4275)	-	-	-
	.281	180	522	719	991	1516	2089	2521	2881	3476	3971	4403	4791	5313	6070	6732	7970	-	-
	(7.14)	(10.4)	(237)	(326)	(450)	(688)	(948)	(1144)	(1307)	(1577)	(1801)	(1997)	(2173)	(2410)	(2753)	(3054)	(3615)	-	-
.25	250	389	543	759	1180	1649	2005	2303	2801	3218	3583	3913	4357	5006	5574	6646	6993	7787	
(6.35)	(17)	(176)	(246)	(344)	(535)	(748)	(909)	(1045)	(1271)	(1460)	(1625)	(1775)	(1976)	(2270)	(2528)	(3015)	(3172)	(3532)	

## Series B BEARTRAP<sup>®</sup>

### Capacities (Gross Ratings)

Series	Orifice Size In (mm)	Seat Pressure psi (bar)	Pressure Differential Pounds Per Square Inch (bar)																
			1/2 (.035)	1 (0.07)	2 (0.14)	5 (0.35)	10 (0.69)	15 (1.0)	25 (1.69)	30 (2.1)	40 (2.8)	50 (3.5)	60 (4.2)	75 (5.2)	100 (6.9)	125 (8.6)	150 (10.4)	200 (13.8)	250 (17)
			Capacity lbs./hr. (kg/hr.)																
B6	.875	25	3930	5250	7330	11000	14100	16300	20000										
	(22.2)	(1.69)	(1784)	(2383)	(3327)	(4994)	(6396)	(7394)	(9072)										
	.750	40	3100	4160	5400	7600	9000	12900	16000	17300	20000								
	(19.0)	(2.8)	(1406)	(1887)	(2449)	(3447)	(4082)	(5851)	(7258)	(7847)	(9080)								
	.500	125	1720	2280	3200	4800	6500	7800	9700	10600	12000	13800	14300	15300	18000	20000			
	(12.7)	(8.6)	(780)	(1035)	(1452)	(2179)	(2951)	(3541)	(4400)	(4812)	(5448)	(6265)	(6492)	(6946)	(8172)	(9080)			
.375	250	1180	1570	2200	3300	4500	5400	6800	7400	8400	9300	10200	11000	12800	14000	15300	17500	19000	
(9.53)	(17)	(535)	(712)	(998)	(1498)	(2043)	(2451)	(3084)	(3359)	(3813)	(4222)	(4630)	(4994)	(5811)	(6356)	(6946)	(7945)	(8626)	

**xylem**  
Let's Solve Water

Xylem Inc.  
8200 N. Austin Avenue  
Morton Grove, Illinois 60053  
Phone: (847) 966-3700  
Fax: (847) 965-8379  
www.bellgossett.com