



Series RS – High Pressure Sensors & Probes For Conductance Actuated Controls

Series RS Sensors



Series-RS-X-BR-1:

- NEMA 4X Enclosure
- For sophisticated multi-level control in tanks, boilers and hydronic systems
- Remote sensors, which thread into the top of the boiler or tank, are available with 1, 2, 3, 4 or 5 probes of varying lengths that can easily be cut to desired set points
- Probe lengths 12 - 72" (2.5 - 183cm) in 12" (2.5cm) increments (purchased separately)
- Control, remote sensor and probe(s) must be ordered separately. Order Spacer S-4 when 2 or more probes greater than 36" (914mm) will be used
- No blow down required
- Maximum Temperature 406°F (208°C)
- Maximum Pressure 250 psig (17.6 kg/cm)

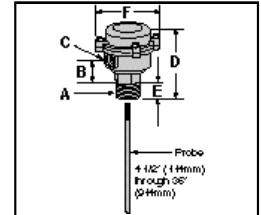
High Pressure Remote Sensors and Probes

Model Number	Part Number	Description	Weight lbs. (kg)
RS-1-BR-1	179524	Remote Sensor; 1 level	1.7 (.8)
RS-2-BR-1	179525	Remote Sensor; 2 levels	3.3 (1.5)
RS-3-BR-1	179526	Remote Sensor; 3 levels	3.3 (1.5)
RS-4-BR-1	179527	Remote Sensor; 4 levels	4.0 (1.8)
RS-5-BR-1	179528	Remote Sensor; 4 levels for non-metallic tanks	4.3 (1.95)

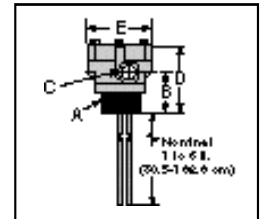
See page 73 for probe rods.



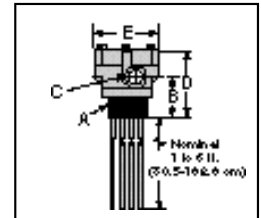
High Pressure Remote Sensor Model RS-1-BR-1



High Pressure Remote Sensor Model RS-2-BR-1 Model RS-3-BR-1



High Pressure Remote Sensor Model RS-4-BR-1 Model RS-5-BR-1



Dimensions, in. (mm)

Remote Sensor	A	B	C
1 Probe	1 NPT	1 1/16 (43)	1/2 NPT
2 or 3 Probes	2 NPT	2 1/32 (59.5)	1/2 NPT
4 or 5 Probes	2 1/2 NPT	2 15/32 (63)	1/2 NPT

Remote Sensor	D	E	F
1 Probe	4 9/16 (116)	1 1/4 (32)	3 1/4 (83)
2 or 3 Probes	3 7/8 (98)	4 (102)	-
4 or 5 Probes	4 (102)	4 (102)	-

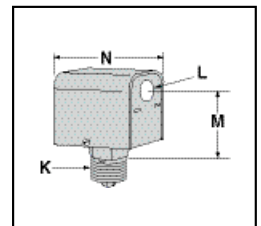
RS-1-HP

Series-RS High Pressure Remote Sensor:

- NEMA 1 Enclosure
- Maximum Temperature 406°F (208°C)
- Maximum Pressure 250 psig (17.6 kg/cm)
- For single sensor applications with high-pressure environments. Requires additional probe rod. See page 73.



Remote Sensor Model RS-1-HP



Ordering Information

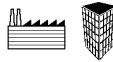
Model Number	Part Number	Description	Weight lbs. (kg)
RS-1-HP	176199	High pressure remote sensor	0.5 (.23)

Dimensions, in. (mm)

Model	K	L	M	N
RS-1-HP Remote Sensor	3/8 NPT	7/8 (22)	3 (80)	3 3/8 (86)

Sensors – High Pressure

Series 750B-C3 Chamber with 3 Probes



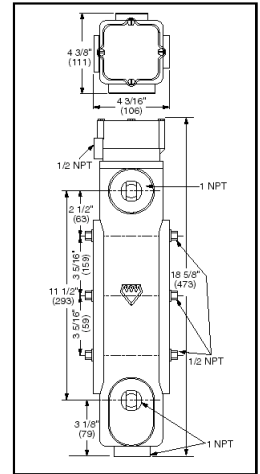
Series 750B-C4 Chamber with 4 Probes

Specifications Chamber

- NEMA 4X chamber enclosure and listed
- Maximum steam pressure 250 psig (17.6 kg/cm²)
- Designed for use with the Series 750B remote mount control module to make a complete system for level control in a boiler or other vessel. See page 78.

Ordering Information

Model Number	Part Number	Description	Weight lbs. (kg)
750B-C3	176316	Cast iron chamber w/3 probes	26 (11.8)
750B-C4	176317	Cast iron chamber w/4 probes	26 (11.8)

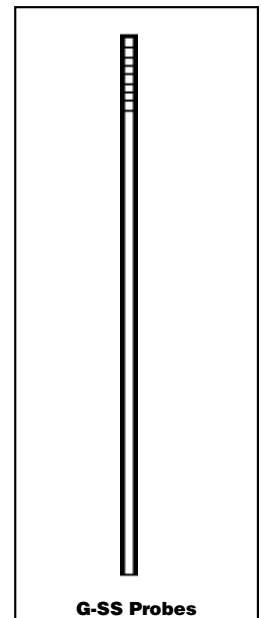
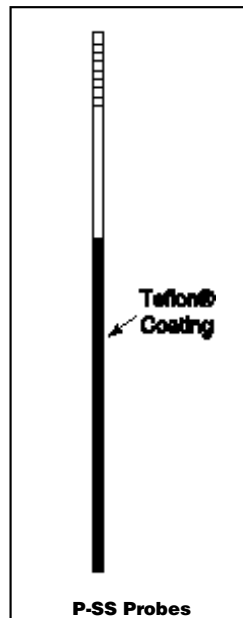


Probe Rods

- Stainless steel - Series 316 material
- Teflon[®] coated probe ends provide protection from false signals [available on 24-72" (610 - 1829mm) probes]
- For use with RS sensors

Ordering Information

Model Number	Part Number	Description	Weight lbs. (kg)
G-2-SS	179156	24" (610mm) Ground Probe	1.0 (.5)
G-3-SS	179157	36" (914mm) Ground Probe	1.5 (.7)
G-4-SS	179158	48" (1219mm) Ground Probe	2.0 (.9)
G-5-SS	179159	60" (1524mm) Ground Probe	2.5 (1.1)
G-6-SS	179160	72" (1829mm) Ground Probe	3.0 (1.4)
P-1/3 SS	176208	4 1/2" (114mm) Probe	0.5 (.23)
P-1-SS	179530	12" (305mm) Probe	0.5 (.23)
P-2-SS	179535	24" (610mm) Probe w/Teflon [®]	1.0 (.5)
P-3-SS	179540	36" (914mm) Probe w/Teflon [®]	1.5 (.7)
P-4-SS	179545	48" (1219mm) Probe w/Teflon [®]	2.0 (.9)
P-5-SS	179550	60" (1524mm) Probe w/Teflon [®]	2.5 (1.1)
P-6-SS	179555	72" (1829mm) Probe w/Teflon [®]	3.0 (1.4)



Selecting control according to anticipated use, the sensor should be selected according to the number of probes required. The probe rods are ordered separately according to length needed. The control, sensor and each probe rod must be specified separately, using the appropriate model and part numbers.